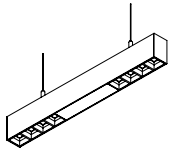


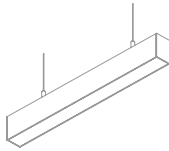
LINE/BL



IRC >90 IP 40 UGR <19



LINE /BL



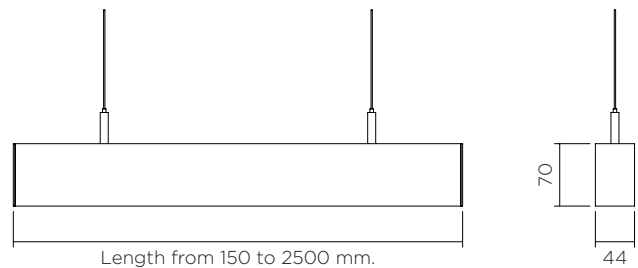
LINE /DIF

PENDANT RANGE LOW LUMINANCE

The new SOKA low-luminance Line creates ambient lighting while combining high light output and visual comfort.

Modifiable thanks to the Tunable White (dynamic white) variation system, this light allows you to select warmer or colder lighting, according to your tastes, ranging from 2700° k to 6500° k.

Fully modular, it offers fantastic adaptability to a range of different spaces: adjustable in terms of length, finish, colour temperature, quantity of LED modules, optics and power, it can be adapted to different lighting and size constraints in order to meet the needs of your project.



16-LED OPTIC
(4 CAVITIES)

IRC 90

3000°k

4000°k

TWIN : 2700°k et 6500K°

FEATURES

- Adaptable
- Integrated driver
- Low-luminance pendant light
- Maximum visual comfort
- Very high-quality, extruded 6060-aluminium profile, up to three metres in length.
- Satin black paint
- One-metre suspension cables provided
- Colour temperatures: 3000° k and 4000° k

OPTIONS

- Tunable white
- Other colour temperatures, beams and finishes
- Remote driver
- Driver déporté

CONTROL *

(integrated driver)

- 0-10V
- DMX
- DALI
- Wireless

*According to driver choice



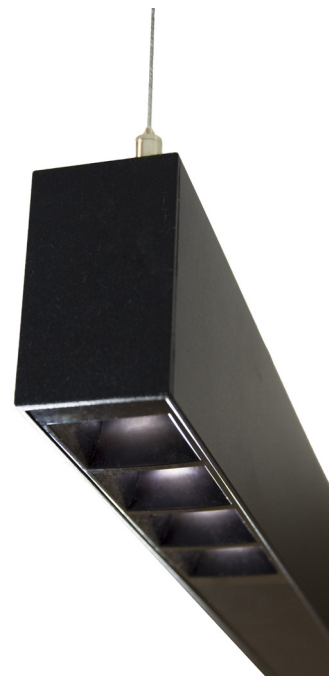
SIMULATION

LOW-LUMINANCE LINE composed of two modules of four LED points with two types of integrated 50° and 80° optics.

LINE/BL



IRC >90 IP 40 UGR <19



POWER* AND PHOTOMETRY* (EXAMPLES)

INDICATIVE DATA FOR LED 3000° K IRC 90

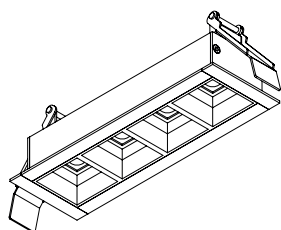
LED type	Voltage	Max direct current	Power	Beams	Candelas in the axis	Lumens output
LINE 1M (4 cavities)	22,5 V	300 mA	6,7 W	50°		1 130 Lms
				80°		1 130 Lms
LINE 2M (8 cavities)	455 V	300 mA	13,5 W	50°		2 260 Lms
				80°		2 260 Lms



*Other photometries available depending on chosen source
Direct connection to 230 VAC.

Devices must be connected to the driver before switching them on.
Failure to respect this requirement will damage the devices irreversibly.
*Data may change according to developments in LED technology.

OTHER VERSION



LUMEO