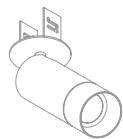


# IOTA M/P



IOTA S/P



IOTA M/P



IOTA ARRA M/P

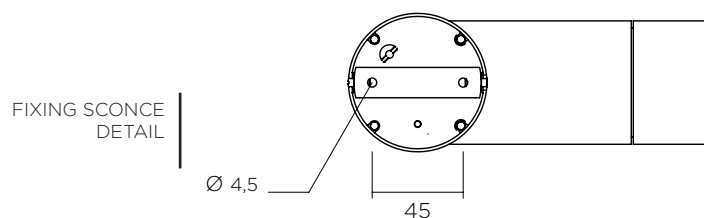
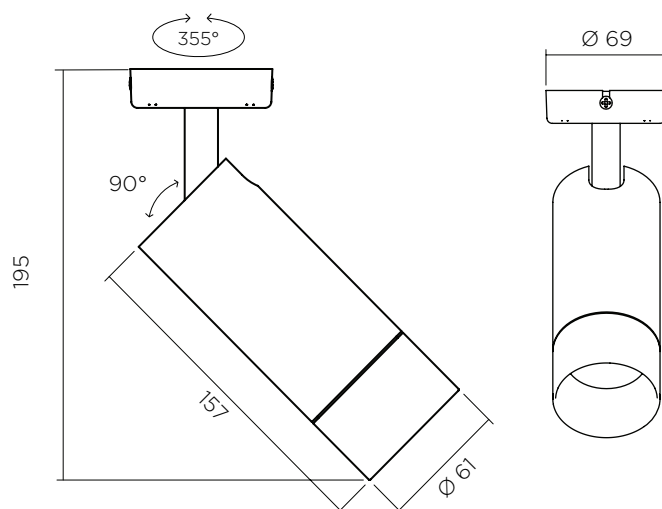


## INDOOR RETROFIT RANGE SCONCE SPOTLIGHT

With a UGR of less than 19, this low-luminance projector diffuses particularly comfortable lighting. Perfect as a replacement for an existing installation, this specific retrofit light adapts to all sources available on the market.

It is also particularly practical, with its screwed-in front panel making it possible to change optics with ease.

Highly attractive, its clean and fine lines render this piece timeless.



## FEATURES

- Mounted on scone
- Direct-current power supply on remote driver or direct 230-VAC connection.
- Colour temperatures: 2700° k, 3000° k, 4000° k
- Up to 1200 Lumens
- 3 MacAdam steps

## OPTIONS

- Dim to warm,
- Other colour temperatures
- Other beams
- Other finishes (custom RAL)

## ACCESSORIES

- Elliptical filters
- Honeycomb grille

## CONTROL\*

- ON/OFF
- 0-10 V
- DALI
- DMX
- Wireless

\*According to driver choice



IOTA S



IOTA M

# IOTA M/P

850°  
     
 90°  **0.9** IRC >90 IP 40 UGR <19  
 KG



## POWER\* AND PHOTOMETRY\*

### INDICATIVE DATA FOR LED 3000° K

LED type	Voltage	Max direct current	Power	Beams	Candelas in the axis	Lumens output
LED 1	35 Vdc	350 mA	12 W	14°	9 815 Cds	1 197 Lms
				20°	5 589 Cds	1 277 Lms
				35°	3 001 Cds	1,278 Lms

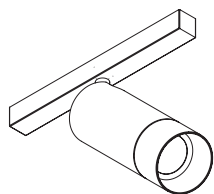
\*Other photometries available depending on chosen source



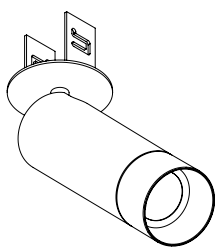
**Connection to a direct current driver (to be ordered separately).**

Devices must be connected to the driver before switching them on.  
 Failure to respect this requirement will damage the devices irreversibly.  
 \*Data may change according to developments in LED technology.

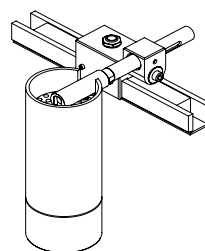
## OTHER VERSIONS



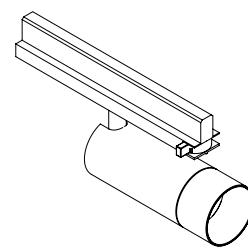
**IOTA M/R**  
ON 48-V BAR



**IOTA M/P**  
ON FLAT SCENCE



**IOTA M/R**  
ON STEM



**IOTA M/R**  
ON 230-V BAR