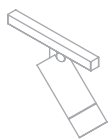


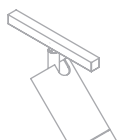
IOTA ARRA M/R⁴⁸



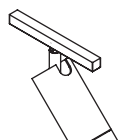
90° 355° 0.9 IRC >90 IP 40 UGR <19
KG



IOTA S/R⁴⁸



IOTA M/R⁴⁸



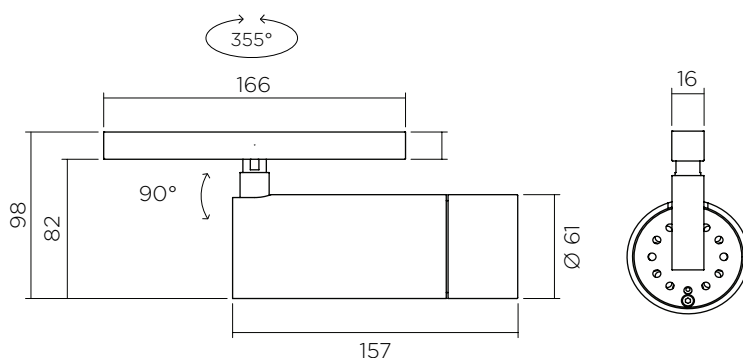
IOTA ARRA M/R⁴⁸

INDOOR 48-VDC SPOTLIGHT BAR RANGE

By its very nature, this spotlight offers exceptional light flux with an IRC of above 90. As a low-luminance product, it diffuses excellent quality of light, offering fantastic visual comfort. Equipped with a powerful ARRA module, it allows you to work with both very tight beams - for precise and intense lighting - or with wider beams. With a wide range of colour temperatures, IRCs and optics, the IOTA adapts to all your needs.

A timeless piece, its sleek and fine lines makes it very contemporary and incredibly stylish.

The 48-VDC magnetic adapter - both simple and practical - disappears into the bar, making it almost invisible.



FEATURES

- Bar supply voltage: 48 Vdc
- LED voltage: 12 Vdc
- Energy consumption: 10 W
- Optics: from 10° to 55°
- Colour temperatures: 2700° k, 3000° k, 3500° k, 4000° k
- Up to 900 Lumens
- 2 MacAdam steps

OPTIONS

- Dim to warm,
- Other colour temperatures
- Other beams
- Other finishes (custom RAL)

ACCESSORIES

- Elliptical filters
- Honeycomb grille

CONTROL*

- ON/OFF
- DALI
- Wireless

*According to driver choice



VERSION

IOTA ARRA M/R⁴⁸ ON STEM



IOTA ARRAN M/R48



POWER* AND PHOTOMETRY*

INDICATIVE DATA FOR LED 3000° K

LED type	Voltage	Max direct current	Power	Beams	Candelas in the axis	Lumens output
LED 2	12 Vdc	900 mA	10.8 W	7°	34 925 Cds	776 Lms
LED 2B	12 Vdc	900 mA	10.8 W	12°	19 590 Cds	994 Lms
				25°	3 796 Cds	740 Lms
				34°	1 987 Cds	545 Lms

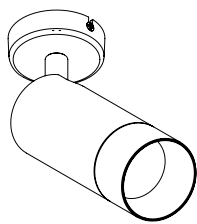
*Other photometries available depending on chosen source



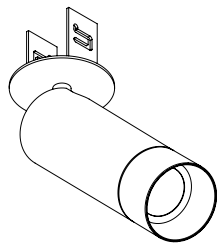
Connection to 48-VDC direct voltage power supply (to be ordered separately).

Devices must be connected to the driver before switching them on.
Failure to respect this requirement will damage the devices irreversibly.
*Data may change according to developments in LED technology.

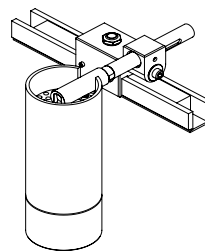
OTHER VERSIONS



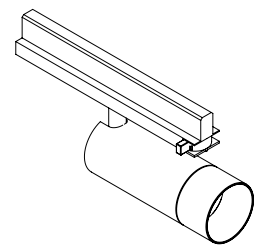
IOTA ARRAN M/P
ON SCONCE



IOTA ARRAN M/P
ON FLAT SCONCE



IOTA ARRAN M/R
ON STEM



IOTA ARRAN M/R
ON 230-V BAR