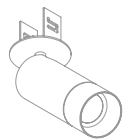


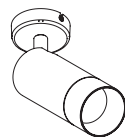
IOTA ARRA M/P



IOTA S/P



IOTA M/P



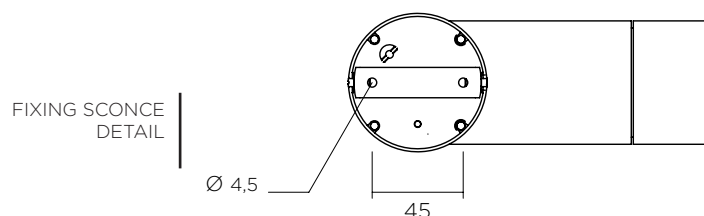
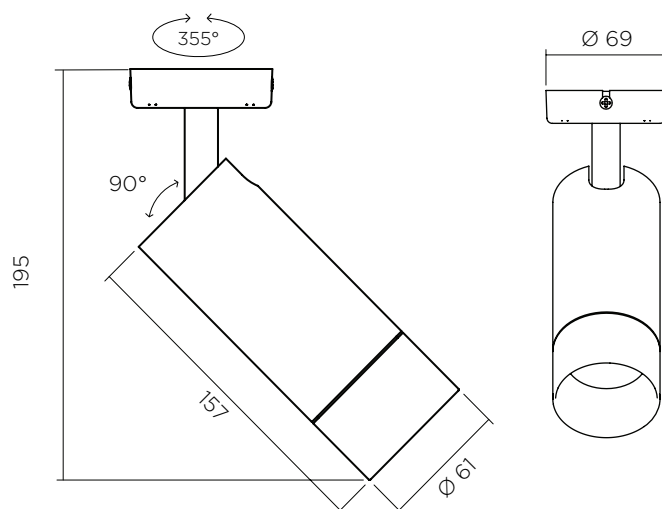
IOTA ARRA M/P

INDOOR RANGE SCONCE SPOTLIGHT

By its very nature, this spotlight offers exceptional light flux with an IRC of above 90. As a low-luminance product, it diffuses excellent quality of light, offering fantastic visual comfort. Equipped with a powerful ARRA module, it allows you to work with both very tight beams – for precise and intense lighting – or with wider beams. With a wide range of colour temperatures, IRCs and optics, the IOTA adapts to all your needs.

A timeless piece, its sleek and fine lines makes it very contemporary and incredibly stylish.

Practical, its screwed front panel makes it easy to change the optics and, consequently, opens up to a wide choice of beams.



FEATURES

- Mounted on scone
- Direct-current power supply on remote driver
- Colour temperatures: 2700° k, 3000° k, 3500° k, 4000° k
- Up to 900 Lumens
- 2 MacAdam steps

OPTIONS

- Dim to warm,
- Other colour temperatures
- Other beams
- Other finishes (custom RAL)

ACCESSORIES

- Elliptical filters
- Honeycomb grille

CONTROL*

- ON / OFF
- 0-10 V
- DALI
- DMX
- Wireless

*According to driver choice



IOTA S



IOTA M

IOTA ARRA M/P

850°
—W—

F

III

CE

5^V
ANS

90°
↻

355°
↻


0,9
KG

IRC
>90

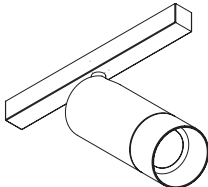
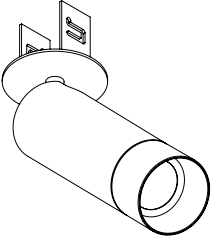
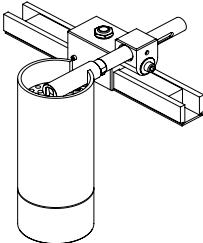
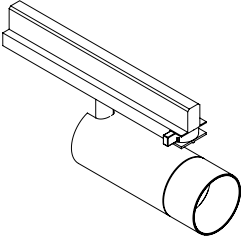
IP
40

UGR
<19

POWER* AND PHOTOMETRY*

	INDICATIVE DATA FOR LED 3000° K					
LED type	Voltage	Max direct current	Power	Beams	Candelas in the axis	Lumens output
LED 2	12 vdc	900mA	10,8 W	7°	34 925 Cds	776 Lms
LED 2B	12 vdc	900mA	10,8 W	12°	19 590 Cds	994 Lms
				25°	3 796 Cds	740 Lms
				34°	1 987 Cds	545 Lms
	*Other photometries available depending on chosen source					
	Connection to a direct current driver (to be ordered separately).					
	Devices must be connected to the driver before switching them on. Failure to respect this requirement will damage the devices irreversibly. *Data may change according to developments in LED technology.					

OTHER VERSIONS

			
IOTA ARRA M/R ON 48-V BAR	IOTA ARRA M/P ON FLAT SCONE	IOTA ARRA M/R ON STEM	IOTA ARRA M/R ON 230-V BAR

28/01/2021 • IOTA-ARRA M/P • subject to errors and technical modifications