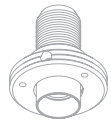


SC01S/ADJUSTABLE



FIXED



ADJUSTABLE



ADJUSTABLE INDOOR RECESSED LIGHTING RANGE

This trimless, adjustable recessed spotlight is designed to be perfectly discreet. As a result, it is ideal for accent lighting, as it highlights the subject to be illuminated while blending into the ceiling itself.

For use in a non-staff ceiling (Wood, metal type, etc.): the spotlight must be integrated before ceiling installation.

The option to couple two spotlights on the same piece of staff makes it possible to optimise the design and implementation of all your lighting projects.

The great adjustability and variety of optics available facilitate beam direction, in order to deliver a perfectly controlled light.

FEATURES

- Beams from 9.9°
- Colour temperatures: 2700° k, 3000° k, 3500° k, 4000° k
- LEDs sorted on 2 MacAdam Ellipses
- Trimless spotlight

OPTIONS

- RGBW
- Tunable white
- Dim to warm
- Other colour temperatures
- Other beams
- Other finishes (anodising or powder-coated painting)
- UL junction box
- COVE LIGHTING rectangle or round
- INSERT

ACCESSORIES

- Elliptical filters
- Honeycomb grille

CONTROL*

- 0-10V
- DMX
- DALI
- Wireless

*According to driver choice

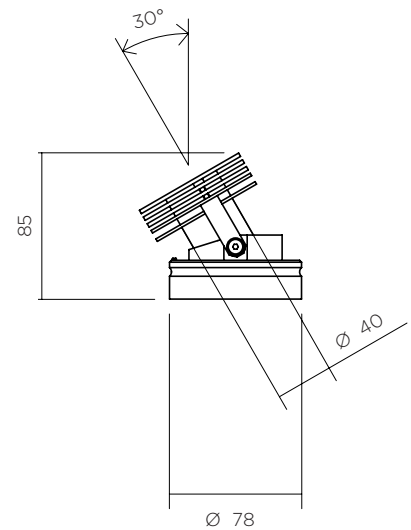


OPTION

SC01 S ADJUSTABLE COVE LIGHTING JUNCTION BOX FOR US MARKET (UL standard)

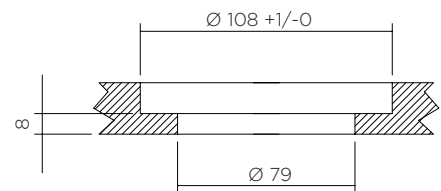


VERSION COVE LIGHTING



CEILING PREPARATION FOR VERSION WITH INSERT*

*for non-staff supports



SC01S/ADJUSTABLE



POWER* AND PHOTOMETRY

INDICATIVE DATA FOR LED 3000° K IRC 90 WITH HONEYCOMB GRILLE

| LED type | Voltage | Max direct current | Power | Beams | Candelas in the axis | Lumens output |
|----------|---------|--------------------|-------|-------|----------------------|---------------|
| LED | 12 Vdc | 700 mA | 8.4 W | 10° | 9 403 Cds | 409 Lms |
| | | | | 12° | 7 437 Cds | 401 Lms |
| | | | | 22° | 2 117 Cds | 341 Lms |
| | | | | 28° | 1 182 Cds | 313 Lms |
| | | | | 39° | 465 Cds | 214 Lms |
| | | | | 48° | 463 Cds | 266 Lms |

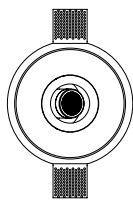


Connection to a direct current driver (to be ordered separately).

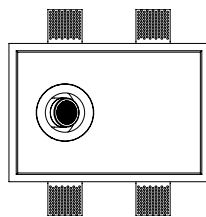
Devices must be connected to the driver before switching them on.
Failure to respect this requirement will damage the devices irreversibly.

*Data may change according to developments in LED technology

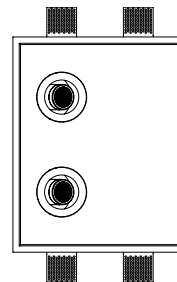
OTHER VERSIONS



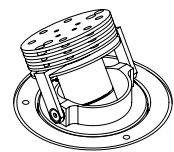
SC01 S/ADJUSTABLE
1 ROUND COVE LIGHTING SPOT-LIGHT



SC01 S/ADJUSTABLE
1 RECTANGLE COVE LIGHTING SPOTLIGHT



SC01 S/ADJUSTABLE
2 RECTANGLE COVE LIGHTING SPOTLIGHTS



SC01 S/ADJUSTABLE
1 SPOTLIGHT WITH INSERT