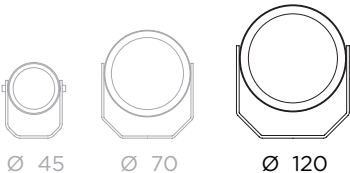


HEMERA 120

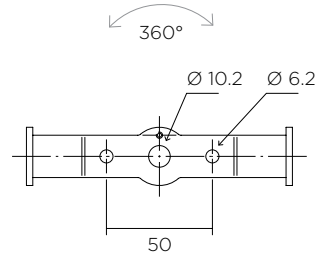
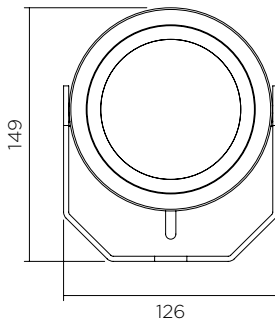
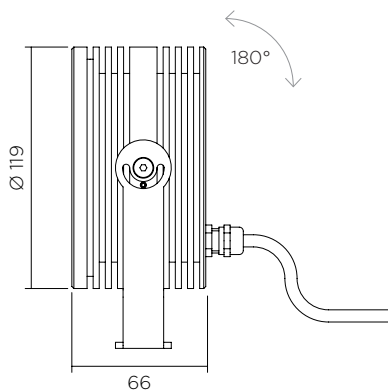


OUTDOOR RANGE

Designed to withstand the harshest weather conditions, this adjustable outdoor spotlight is the most powerful light in the range.

Machined in one piece using the best aluminium alloys, it benefits from marine-quality anodisation treatment. Anti-corrosion and anti-condensation, it is equipped with a 6-mm screen-printed protective glass. Highly robust, it can resist wear due to extreme conditions such as sea air, strong gusts of wind or extreme temperatures.

With a wide range of optics and four types of high-performance LEDs, this light adapts to all your lighting projects. Highly flexible, it allows you to accentuate both a precise point via an ultra-intensive beam or achieve more homogeneous lighting thanks to a choice of optics with wider beams.



FEATURES

- Zero condensation
- Up to 45,000 Candelas in the axis
- Optics: from 5° to 84°
- Colour temperatures: 2700° k, 3000° k, 3500° k, 4000° k
- Maximum LED power: up to 32W
- LEDs sorted on 2 MacAdam Ellipses

OPTIONS

- RGBW
- Tunable white
- Dim to warm
- Other colour temperatures
- Other beams
- Other finishes (*anodising or powder-coated painting*)

ACCESSORIES

- Elliptical filters
- Honeycomb grille
- Cap/snoot
- Pole

CONTROL*

- 0-10V
- DMX
- DALI
- Wireless

*According to driver choice



ACCESSORIES

HEMERA 120 CAP & HONEYCOMB GRILLE

HEMERA 120



POWER AND PHOTOMETRY

INDICATIVE DATA FOR LED 3000° K CRI 90

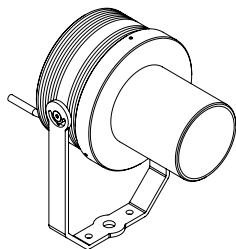
| LED type | Voltage | Max direct current | Power | Beams | Candelas in the axis | Lumens output |
|----------|---------|--------------------|-------|-------|----------------------|---------------|
| LED 2 | 12 Vdc | 900 mA | 11 W | 5,7° | 43 692 Cds | 741 Lm |
| | | | | 11° | 36 541 Cds | 1 709 Lm |
| LED 3 | 35 Vdc | 600 mA | 21 W | 22° | 9 199 Cds | 1 646 Lm |
| | | | | 36° | 3 958 Cds | 1 614 Lm |
| LED 4 | 37 Vdc | 900 mA | 33 W | 17° | 25 748 Cds | 2 656 Lm |
| | | | | 21° | 12 997 Cds | 2 511 Lm |
| LED 5** | 37 Vdc | 900 mA | 32 W | 33° | 6 109 Cds | 2 450 Lm |
| | | | | 32° | 5 482 Cds | 3 574 Lm |
| | | | | 50° | 3 838 Cds | 3 608 Lm |
| | | | | 66° | 3 090 Cds | 3 587 Lm |
| | | | | 84° | 2 008 Cds | 3 613 Lm |



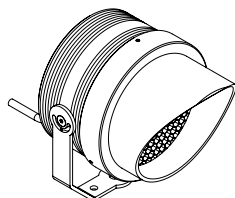
Connection to a direct current driver (to be ordered separately).

Devices must be connected to the driver before switching them on.
Failure to respect this requirement will damage the devices irreversibly.
**Version with reflector

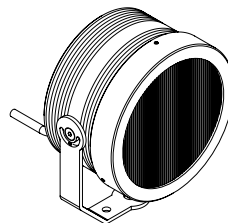
OTHER VERSIONS



HEMERA 120
SNOOT



HEMERA 120
CAP



HEMERA 120
FILTER HOLDER